

Product information

Universal dimming actuator DIM4FU-2-FW



Universal dimming actuator 4 x 2,5 A

The new Lingg & Janke KNX 4-gang universal dimmer can be used for all common dimmable light sources, including energy saving and LED retrofit lamps. It offers the operating modes universal, leading-edge and trailing-edge control. Each channel can be connected to a maximum load of 570 W/VA. For greater lamp loads, two dimming channels can be operated in parallel so that a dimming output of 2x 1140 W/VA can be achieved.

All four channels are 100 percent short-circuit proof. In addition, each channel has its own integrated energy consumption meter that can read out active energy, active power, voltage (V_{rms}) and current (I_{rms}) values. The data format is the same as for the Lingg & Janke energy meters. The dimmer provides full FacilityWeb capability and has its own homepage

- 100 percent short-circuit proof
- Specific dimming curves for all makes of dimmable LED retrofit and energy saving lamps
- Dimming range from 0 to 100% with no base load constraints
- 32 light scenes per channel
- Internal logging of energy, output, voltage and current values
- Full FacilityWeb functionality

KNX Universal dimming actuator DIM4FU-2-FW

Description

All 4 dimming channels are electrically isolated from each other and can be used in different electric circuits.

For each channel, the operating modes universal, leading edge and trailing edge control can be set by means of DIP switches.

Specific dimming curves can be set for energy saving and LED retrofit lamps to provide a flicker-free dimming range from 0 to 100% with no minimum load constraints.

Each channel can be manually adjusted on the device by means of one button operation. This allows testing of the connected lamp prior to the actual KNX commissioning.

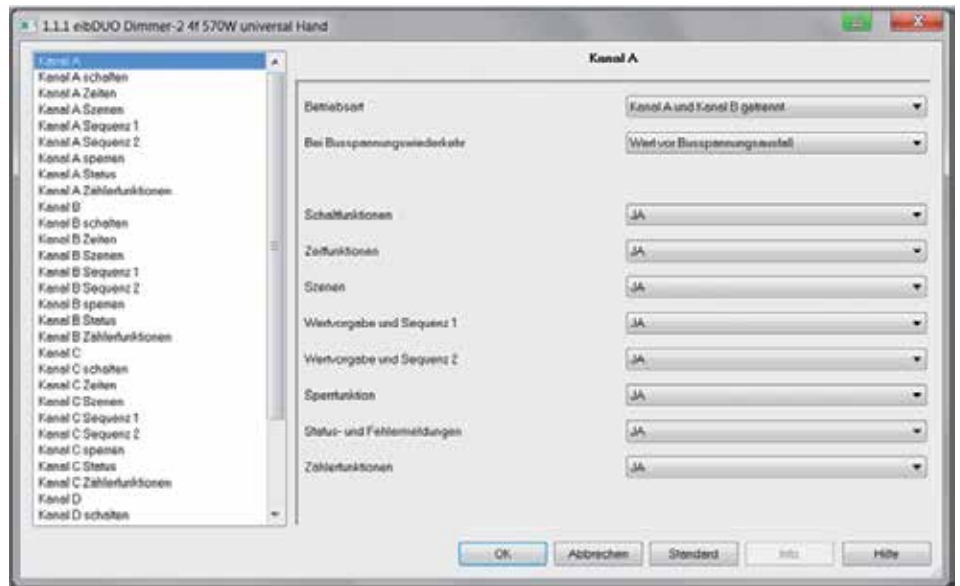
The device has been designed for DIN rail mounting (35mm) and is 12RU wide.

Suitable lamps

- Energy saving lamps
- 230V LED retrofit lamps
- Filament lamps
- High-voltage tungsten halogen lamps
- Low-voltage tungsten halogen lamps using electronic or magnetic transformers
- Fluorescent lamps with VIP-90

KNX parameter settings

- Operating mode (for each individual channel or common mode for two channels)
- Dimming functions
- Light scenes
- Light sequences
- Switching functions
- Time functions
- Locking functions
- Status and error messages
- Energy metering functions



Types of data points (Extract)

- 0: Eingang A schalten - Kanal A Objekt 1
- 1: Eingang A dimmen - Kanal A Objekt 2
- 2: Eingang A Wert - Kanal A Objekt 3
- 3: Ausgang A StatusSchalten - Kanal A Objekt 4
- 4: Ausgang A StatusWert - Kanal A Objekt 5
- 5: Eingang A sperren - Kanal A Objekt 6
- 6: Eingang A Szenen - Kanal A Objekt 7
- 7: Eingang A Sequenz 1 - Kanal A Objekt 8
- 8: Eingang A Sequenz 2 - Kanal A Objekt 9
- 9: Ausgang A FehlerAllgemein - Kanal A Objekt 10
- 10: Ausgang A FehlerKeinNetz - Kanal A Objekt 11
- 11: Ausgang A FehlerÜberlastung - Kanal A Objekt 12
- 12: Ausgang A Zähler S/N - Kanal A Objekt 12
- 13: Ausgang A Zählerstatus - Kanal A Objekt 13
- 14: Ausgang A Zählerstand (kWh) - Kanal A Objekt 14
- 15: Ausgang A Zählerstand (Wh) - Kanal A Objekt 15
- 16: Ausgang A Wirkleistung (W) - Kanal A Objekt 16
- 17: Ausgang A Spannung (V) - Kanal A Objekt 17
- 18: Ausgang A Strom (A) - Kanal A Objekt 18
- 19: Eingang B schalten - Kanal B Objekt 1
- 20: Eingang B dimmen - Kanal B Objekt 2
- 21: Eingang B Wert - Kanal B Objekt 3
- 22: Ausgang B StatusSchalten - Kanal B Objekt 4
- 23: Ausgang B StatusWert - Kanal B Objekt 5
- 24: Eingang B sperren - Kanal B Objekt 6
- 25: Eingang B Szenen - Kanal B Objekt 7
- 26: Eingang B Sequenz 1 - Kanal B Objekt 8
- 27: Eingang B Sequenz 2 - Kanal B Objekt 9
- 28: Ausgang B FehlerAllgemein - Kanal B Objekt 10
- 29: Ausgang B FehlerKeinNetz - Kanal B Objekt 11
- 30: Ausgang B FehlerÜberlastung - Kanal B Objekt 12
- 31: Ausgang B Zähler S/N - Kanal B Objekt 12
- 32: Ausgang B Zählerstatus - Kanal B Objekt 13

Technical Data

Nominal voltage

48 V (-10%) to 230 V (+10%)

Nominal frequency

45 - 65 Hz

Minimum load of dimmer output

1 W

Maximum load of dimmer output

4 x 570 W/VA

Ohmic / inductive / capacitive

Standby power dissipation

0.4 W per channel

Power dissipation at nominal load

4.7 W per channel

Short circuit-overcurrent protection

Electronic quick breaking

KNX communication objects

76

KNX group addresses

max. 76

KNX allocations

max. 76

Art. Nr. 877601 PI Universal Dimming Actuator DIM4FU-2-FW 4 x 2,5A 12TE