

NK1 / NK2 LAN and IP network coupler

ETS application and built in visualisation are similar.

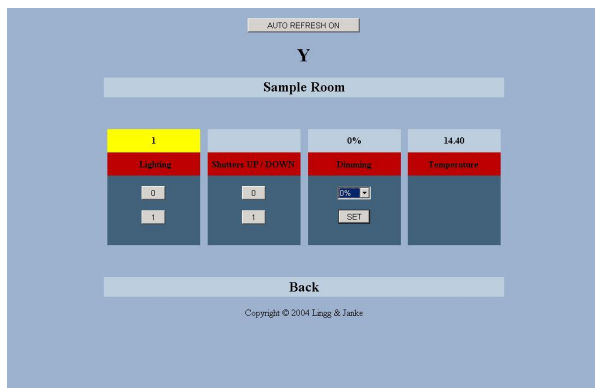
For details of the NK2 additional visualisation software see separate manual.



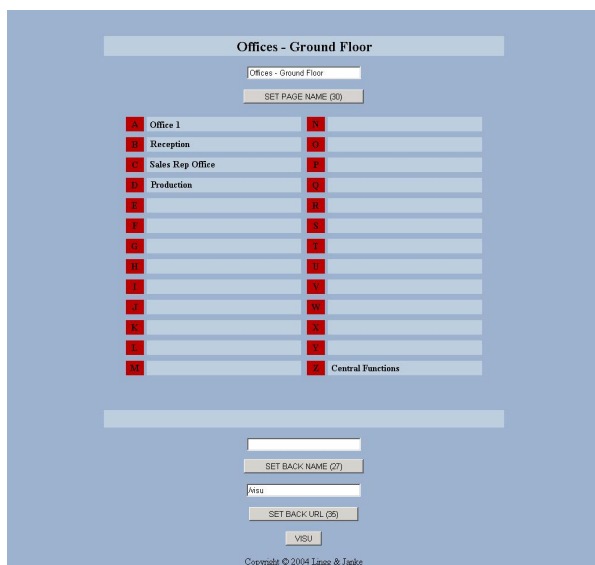
NK1/NK2 LAN and IP network coupler

The NK gateways connect the EIB / KNX bus with an IP network. They have an http and ftp server on board and come equipped with a 104 datapoint visualisation. ■ This built-in visualisation can be viewed directly with a standard web browser without any additional configuration. Any required settings are performed via ETS (group addresses / datapoint types / IP addresses), or within the visualisation itself using a browser (button labels / page headings / page links). Optionally, thanks to the integrated web server, the visualisation can be easily extended and its functionality enhanced. ■ In this way the NK permits you to create a network enabled visualisation simply with ETS and a web browser, so without the need for any additional software tools. ▽ Via an external coupling of the (LAN) network to Internet through a router, the NK can now also be controlled per remote

Internet access. All functions are protected from unauthorised access with a password. ■ It is possible, for example, to store the latest version of the ETS project data file on the NK1, making it available on site in the installation. ■ ETS3 can also be connected with the EIB / KNX installation via NK (using the EIBlib/IP protocol), for commissioning (download) and parameter settings. Given the proper Internet connectivity, you can thus perform remote maintenance and programming of the bus installation. ■ For special software or visualisation needs, the NKs come with a dedicated command interface, allowing the 104 datapoints of the integrated visualisation to be controlled externally. ■ A mini visualisation derived from the integrated visualisation is also given to have access via your mobile phone (Internet access required).



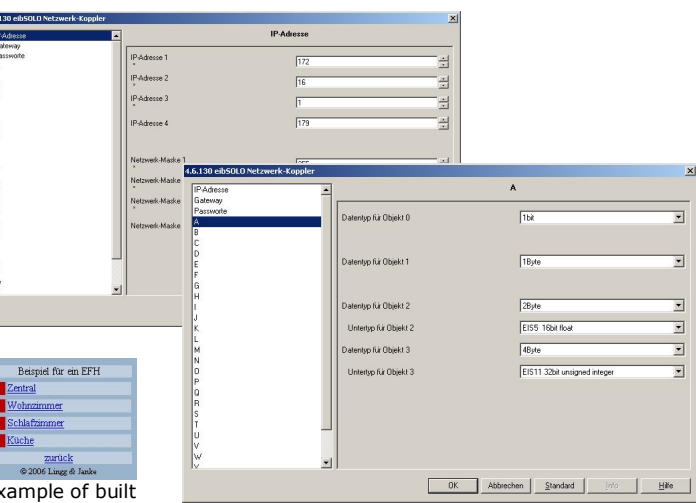
example of built in visualisation



browser configurable built in visualisation

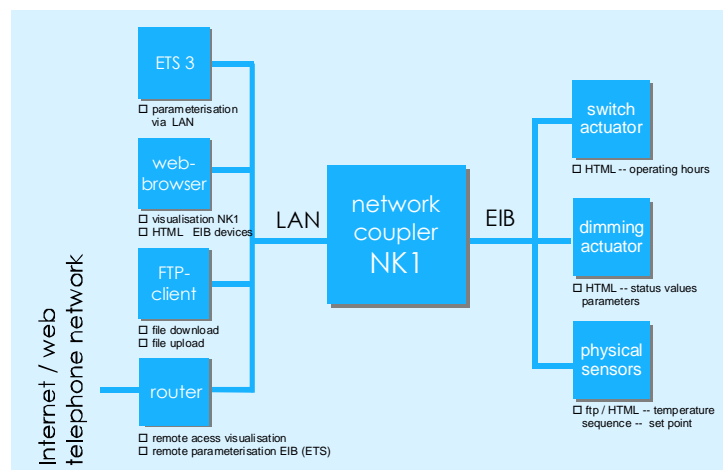
technical specifications

group addresses: up to 111
 data points: up to 104
 associations: up to 111 (dynamic)
 network: 10/100 Mbit / RJ45 connector
 HTTP / FTP server: 4 Mbyte disk space
 built in visualisation: 26 pages / 4 data points per page



example of built in mini visu

ETS parameter settings



application example: accessing device logs via IP